

Amada HD 1003 + ATC

Year 2014

Machine hours: about 25.000h



Description

- Press force 1700 kN
- Bending length 3000 mm
- Servo-hydraulic drive
- Patented compensation system
- Control AMADA AMNC-NT
- Back gauge system with 5 cnc controlled axis
- Hinteranschlag mit Delta X-Funktion
- Motor-operated foot pedal
- Safety device type AKAS III
- Angle measuring system DigiPro, wireless
- Barcode reader
- Network connection prepared

Technical Data

Machine

Maximum press force	1000 kN
Minimum adjustable press force	40 kN
Length of beam	3110 mm
Distance between frames	2700 mm
Throat depth	450 mm
Stroke	200 mm
Installation height	596 mm
Beam width	60 mm

Working height	950 mm
Approach speed	1-120 mm/s
Folding speed	1-10 mm/s
Return speed	1-120 mm/s

Automatic tool changer (AutoToolChanger ATC)

The system's four-axis manipulator precisely selects and places punches and dies from the tool magazine. Locating and loading the appropriate tooling is performed quickly and efficiently. In combination with the ATC the hydraulic clamping provides the safe mounting of the tools.

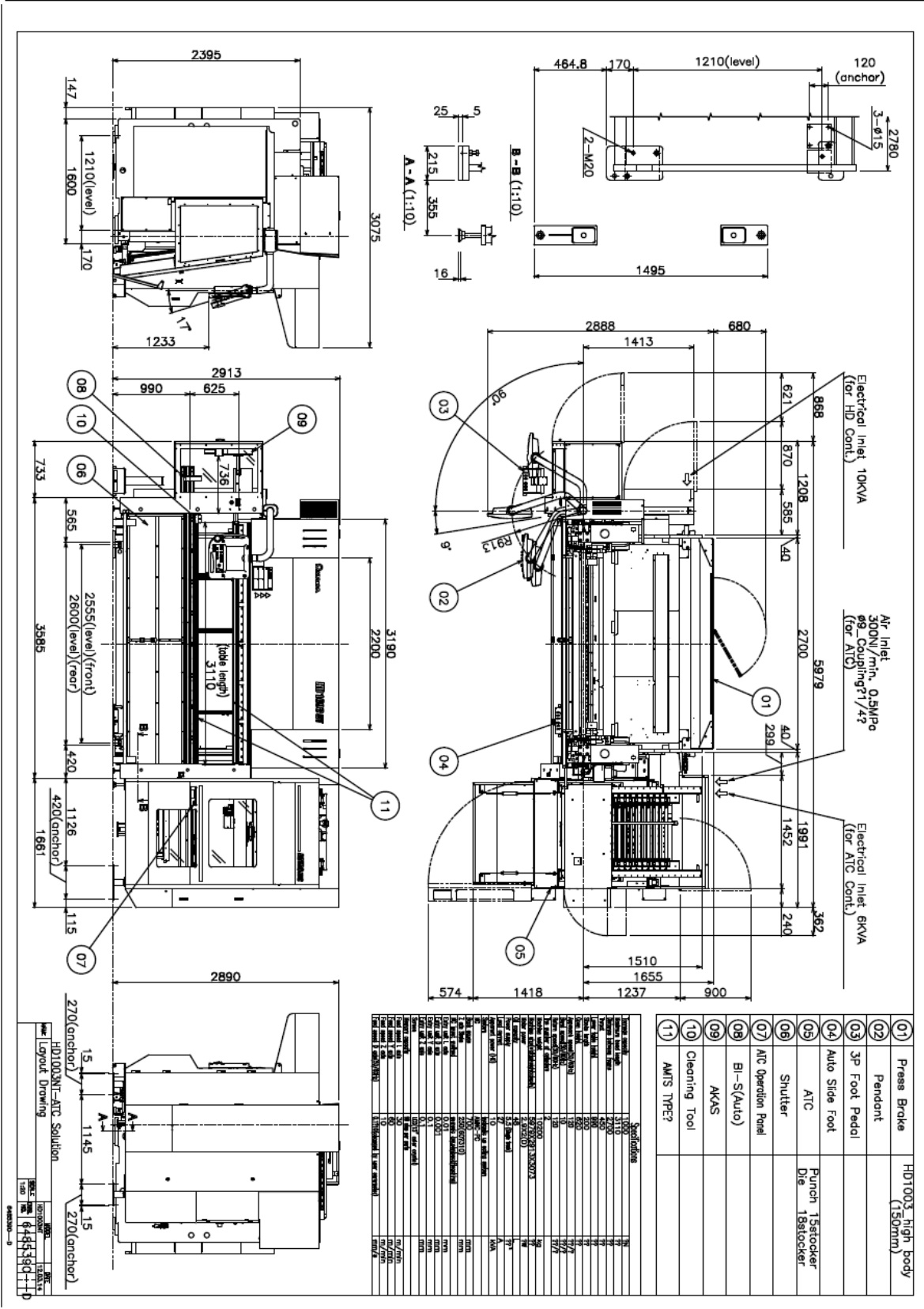
15 stores for punches
18 stores for dies
Tool length eachs 800 mm
System Amada-AMTS for punches and dies

Safety door

- Protection from moving parts during the setup process
- Convenient handling
- Closed during the setup process

Measurement and Anschlussdaten

Power requirement	400 V / 22 kVA / 50 A
Total length	5980 mm
Total width	3075 mm
Total height	2915 mm
Machine weight	11.000kg



01	Press Brake	HD1003_high body (150mm)
02	Pendant	
03	3p Foot Pedal	
04	Auto Slide Foot	Punch 1stoccker Die 1stoccker
05	ATC	
06	Shutter	
07	ATC Operation Panel	
08	BI-S(Auto)	
09	AKAS	
10	Cleaning Tool	
11	AMTS TYPE2	

Sprockelrollen	
1000	1000
1200	1200
1400	1400
1600	1600
1800	1800
2000	2000
2200	2200
2400	2400
2600	2600
2800	2800
3000	3000
3200	3200
3400	3400
3600	3600
3800	3800
4000	4000
4200	4200
4400	4400
4600	4600
4800	4800
5000	5000
5200	5200
5400	5400
5600	5600
5800	5800
6000	6000
6200	6200
6400	6400
6600	6600
6800	6800
7000	7000
7200	7200
7400	7400
7600	7600
7800	7800
8000	8000
8200	8200
8400	8400
8600	8600
8800	8800
9000	9000
9200	9200
9400	9400
9600	9600
9800	9800
10000	10000

